

CANTILEVER RACKING

PRODUCT

Cantilever racking is a system specifically designed for the safe and organised storage of long and heavy loads. Our cantilever systems are an effective and efficient alternative to conventional lighter weight storage solutions.



FEATURES

Manufactured within the UK, our system features:

- A robust design with all uprights and bases manufactured from heavy duty universal beam sections.
- Individual structural calculations to ensure that the most cost effective solution is provided.
- Options for single or double sided units with a wide range of painted or galvanised finish.
- A wide range of accessories.
- Vertical arm adjustment on 150mm pitch as standard.

BENEFITS

We can supply:

- Arm lengths and capacities to suit your requirements.
- Rack heights up to 12m to carry up to 30 tonnes.
- An open fronted system providing the ability to store varying length items.



DESIGN

All products comply with current British & CE Marking Standards:

- Minimum Safety Factor of 2.5 based on ultimate tensile strength.
- Arm deflection limited to 1/180th of length.
- Upright deflection limited to 1/120 of height or 50mm, whichever is less.
- Maximum allowable weld stress of 115N/mm²



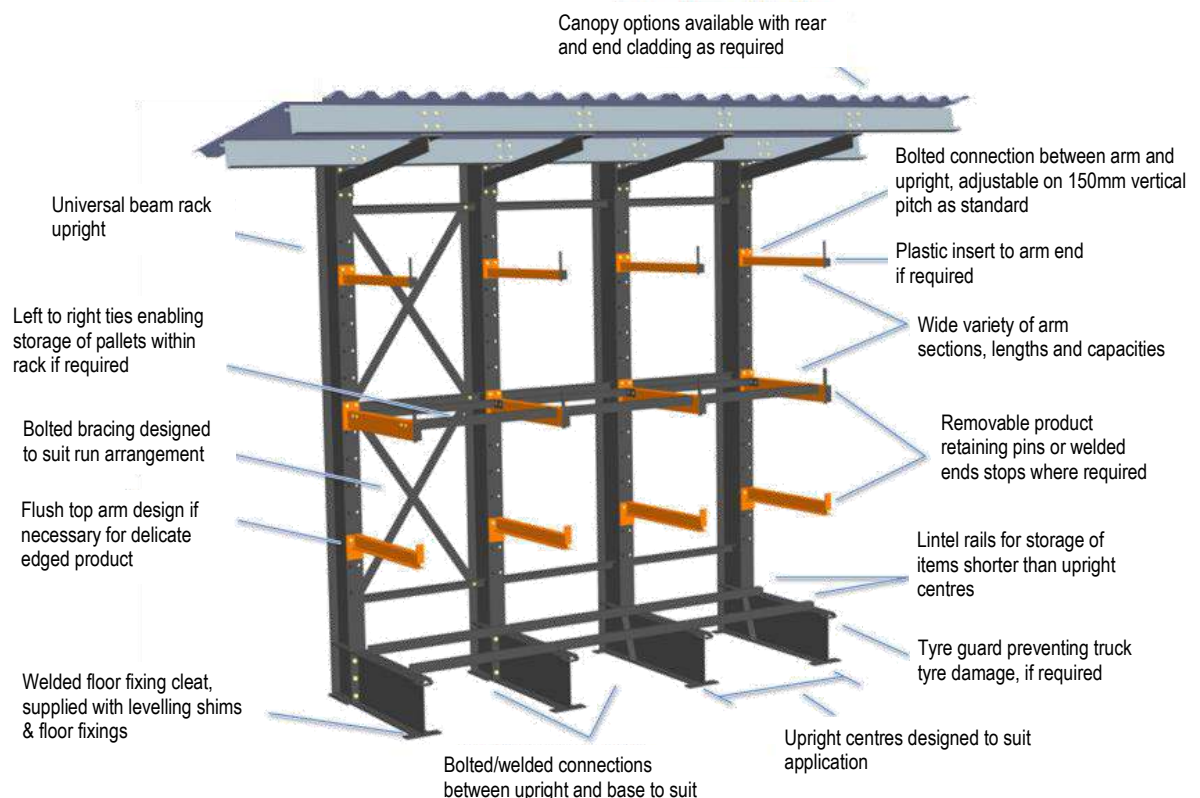
APPLICATIONS

- Aluminium sheet and plate
- Heavy pipes or tubes
- Timber packs
- Scrap vehicles
- Panels
- Steel Sections: plate or sheet
- Raw materials
- Worktops & laminates
- Concrete & sheet lintels



CANOPIES & CLADDING

We also produce Cantilever Racking fitted with canopies and rainwater goods that will protect your externally stored products from weather damage. In addition to roofs, we also offer a complete Rack Clad Building package, a very cost-effective way of constructing a stand-alone storage building.



EXTRAS

RETAINING PINS

Available in the following sizes:
Standard Retaining Pins (100mm high);
Heavy Duty Retaining Pins (100mm high);
Heavy Duty Retaining Pins (300mm high).

*! Box section arms are drilled to take a retaining pin.
I-beam arms have a welded arm pocket to locate the pin.*



WELDED END STOPS

Tyre guards prevent damage to forklift tyres.
1x tyre guard is required per base, if specified.



TYRE GUARDS

Tyre guards prevent damage to forklift tyres.
1x tyre guard is required per base, if specified.

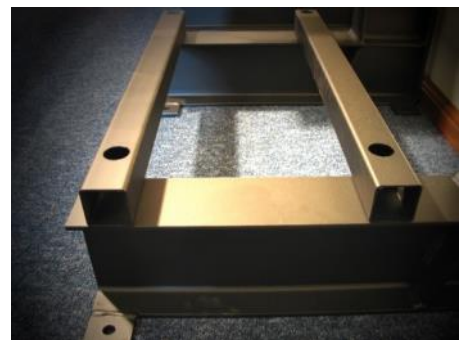
! Standard tyre guard will not fit onto base narrower than 152 I-beam section.



LINTELS/BASE RAILS

Lintel rails are most commonly used on the base level of a cantilever rack and are often referred to as base rails.

! A rack that has a base length of up to 1200mm will usually require 2 rails.



DECKING

Arm ties and decking might be required to store various length products on the same rack.

Options of timber or steel mesh decking are available.



EXTRAS

HEAD GUARDS

Optional protective foam head guards are compatible with universal beam arms only and are normally applied to one level of arms at head height.

! Compatible with 127×76 UB arms only



FLUSH TOP ARMS

Available with UB and PFC arms, flush top arm plate fixing location prevents product edge damage.

! Not available with box section arms.



PLASTIC ARM STRIPS & BACKSTOPS

Plastic arm strips help to minimise damage to products from contact with steel and prevent cross-contamination.

! Surfaces need to be pre-treated to ensure good adhesion.



SPINDLE HOLDERS ON ARMS

Welded to Cantilever Rack arms, spindle holders are specially fabricated to suit specific spindle sizes and storage application.



P&D STATIONS

Cantilever P&D (Pick Up & Deposit) stations are used at the end of the racking aisles to improve the operation time and logistics in warehouses. P&D stations are fitted with arm ties, supplied with pallet guides on arms and pallet back stops to ensure efficient loading of the rack.

